



Keegan White
ESTATE AGENTS

Keegan White
ESTATE AGENTS

7 Walnut Tree House | £240,000



Keegan White
ESTATE AGENTS



Keegan White
ESTATE AGENTS



Keegan White
ESTATE AGENTS

Features

- Three Bedrooms
- Short Term Rental
- Three Bedrooms
- Brand New Boiler
- EPC Rating C (75)
- 60sqm Gross Floor Area

Walnut Tree House has a communal front door that leads into the communal hallway with stairs rising to upper floors. The private front door opens into the entrance hallway that provides access to all rooms. The kitchen has plenty of storage above and below the worktops, with sink and drainer, integrated oven with gas hob and overhead extractor fan, washing machine, and the Worcester gas boiler.

The apartment has three bedrooms (please see floorplan for dimensions), a family bathroom with a white three piece bathroom suite and window,

and the living room is certainly generous in its proportions. Externally, there are communal gardens and allocated parking.

Tenancy Information:

Tenancy Commencement Date: ASAP (vacant)
 Tenancy Duration: Six Months maximum
 Security Deposit: £1,384
 Holding Monies: £276
 No Tenant Fees

7 Walnut Tree House, | High Wycombe | HP11 1LQ



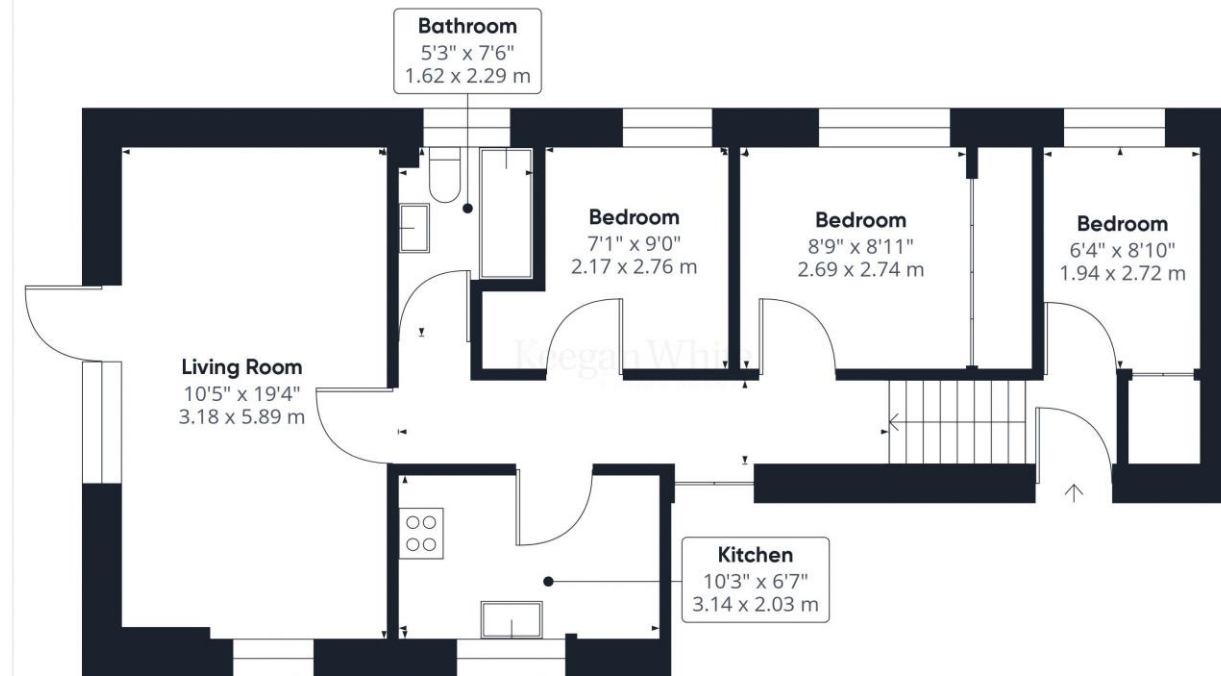
Walnut Tree House forms part of the Brambleside development located in Loudwater, to the east of High Wycombe and west of Beaconsfield. To the north are the Chiltern villages of Penn and Tylers Green. Within close proximity are a wide range of amenities numbering among them the Ryemead Retail Park which also has a gym, schools and supermarkets. Junction 3 of the M40 Motorway is a 4 minute drive and is London bound. Public transport passes close by and links the town centre. Within High Wycombe's town there is a great range of facilities including The Eden Shopping Centre that has a host of retail, leisure and hospitality venues. For out door leisure pursuits, Kingsmead Park is within a short walk and links up to Rye

Park with facilities & clubs including High Wycombe Rugby Club, Netball Club, Bowls, Tennis, Cricket and the Lido with its outdoor pool. For rail commuters, Beaconsfield would be best for access to London Marylebone with fast trains taking less than half an hour.

Additional Information:

Council Tax Band C
EPC Rating C (75)





Approximate total area⁽¹⁾
645.85 ft²
60 m²

(1) Excluding balconies and terraces

While every attempt has been made to ensure accuracy, all measurements are approximate, not to scale. This floor plan is for illustrative purposes only.

GIRAFFE360

These particulars are not an offer or contract, nor part of one. You should not rely on statements by Keegan White Ltd. in the particulars or by word of mouth or in writing as being factually accurate about the property, its condition or its value. Keegan White Ltd. has no authority to make any representations about the property, and accordingly any information given is entirely without responsibility on the part of the agents, seller(s) or lessor(s). The photographs show only certain parts of the property as they appeared at the time they were taken. Areas, measurements and distances given are approximate only. Any reference to alterations to, or use of, any part of the property does not mean that any necessary planning, building regulations or other consent has been obtained. A buyer or lessee must find out by inspection or in other ways that these matters have been properly dealt with and that all information is correct. Keegan White Ltd. is a limited company registered in England & Wales with company number 9726292. Our registered office is 102-104 High Street, Great Missenden, Bucks, HP16 0BE

33-35 Crendon Street, High Wycombe, Buckinghamshire HP13 6LJ

Tel: 01494 417007

Email: wyc@keeganwhite.co.uk

keeganwhite.co.uk